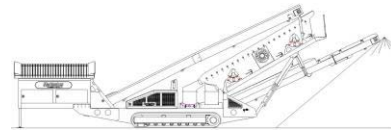


SPECIFICATIONS



McCloskey S190 3-Deck

**DESCRIPTION**

Heavy duty mobile screener with following features:

- 20x5 heavy duty high energy 2 bearing 3 deck screenbox.
- 125Hp Cat engine.
- Track or wheel mobile.
- Integrated hydraulic folding stockpiling conveyors.
- 3 Deck auxiliary conveyor attaches to machine for one unit transport.
- Remote control tipping grid.
- Fast on site setup time – 10 minutes (2 Deck machine).

DIMENSIONS AND WEIGHTS

Length - transport all models	17.16m (56' - 4")
Width - transport all models	3.0m (9' - 10")
Height - transport track	3.45m (11' - 4")
Height - transport wheel	3.73m (12' - 3")
Weight - track	36,500 Kgs (80,468 lbs) - estimated
Weight - wheel	33,000 Kgs (72,752 lbs) - estimated

CAPACITIES

Diesel tank capacity	399 L (105 gal)
Hydraulic tank capacity	630 L (166 Gals)
Capacity - 12ft hopper	8.01 m ³ (10.48 yd ³)
Capacity - 15ft hopper	10.01 m ³ (13.09 yd ³)

FEED CONVEYOR

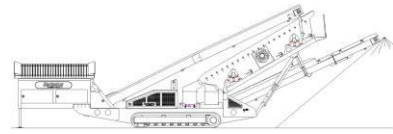
Belt width	1200mm (48")
Belt spec	Plain 500/3 6+3
Drive drum dia.	335mm (13.1")
Tail drum dia.	320mm (12.5")
Gearbox	Bonfig 805 W2
Gearbox ratio	24.2
Gearbox torque	7000Nm cont, 12500Nm max
Motor	Danfoss OMSS160
Flow rate	72.6 Lpm (19.2 US gpm)
Adjustable speed	YES
Maximum speed	18.75 rpm

MAIN CONVEYOR

Belt width	1050mm (42")
Belt spec	Chevron Pattern 400/3 6+1.5
Drive drum dia.	285mm (11.2")
Tail drum dia.	270mm (10.6")
Motor	Danfoss OMV800
Flow rate	101.2 Lpm (26.7 US gpm)

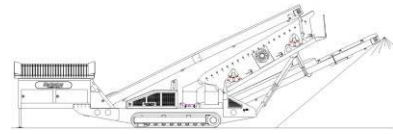


S190 3D
Oct. 2009, issue 005



Adjustable speed
Maximum speed

OPTION
126.5 rpm

**TAIL CONVEYOR**

Stockpile height - track model	4638mm (15' - 3")
Stockpile height - wheel model	4905mm (16' - 1")
Belt width	1200mm (48")
Belt spec	Plain - 400/2 6+1.5
Drive drum dia.	285mm (11.2")
Tail drum dia.	270mm (10.6")
Motor	Danfoss OMV800
Flow rate	101.2 Lpm (26.7 US gpm)
Maximum speed	126.5 rpm

SIDE CONVEYOR

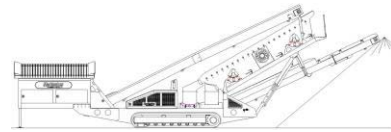
Stockpile height - track model	5100mm (16' - 9")
Stockpile height - wheel model	5370mm (17' - 7")
Belt width	800mm (32")
Belt spec	Chevron - 400/3 6+1.5
Drive drum dia.	285mm (11.2")
Tail drum dia.	270mm (10.6")
Motor	OMT400
Flow rate	50.6 Lpm (13.4 US gpm)
Adjustable speed	YES
Maximum speed	126.5 rpm

3 DECK TRANSFER CONVEYOR

Belt width	650mm (26")
Belt spec	Plain 400/3 4+2
Drive drum dia.	200mm (8")
Tail drum dia.	200mm (8")
Motor	OMT400
Flow rate	50.6 Lpm (13.4 US gpm)
Adjustable speed	YES
Maximum speed	126.5 rpm

3 DECK AUXILLARY CONVEYOR

Stockpile height - track model	4700mm (15.5')
Belt width	650mm (26")
Belt spec	Chevron - 400/3 6+1.5
Drive drum dia.	293mm (11.5")
Tail drum dia. (spoked)	270mm (10.6")
Motor	OMT400
Flow rate	50.6 Lpm (13.4 US gpm)
Adjustable speed	YES
Maximum speed	126.5 rpm

**SCREENBOX**

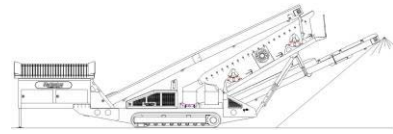
Dimensions - top deck	6100mm x 1524mm (20' x 5')
Dimensions - middle deck	6100mm x 1524mm (20' x 5')
Dimensions - bottom deck	5490mm x 1524mm (18' x 5')
Bearing type 3 Deck	NSK 130mm bore
Screens - top deck	5' x 4' side tension - 5 off
Screens - middle deck	5' x 4' side tension - 5 off
Screens - bottom deck	5' x 6' end tension - 3 off
Tensioning - top deck	Quick release pin and wedge
Tensioning - middle deck	Quick release pin and wedge
Tensioning - bottom deck	Curved tension bar and adjuster
Screen angle	20 to 30 deg
Screen motor	DBH MCC2213 (85.7cc/rev)
Drive system	Direct drive with HRC180 coupling
Hydraulic flowrate	101.2 Lpm (26.7 US gpm)
Speed adjustable	YES - Pressure compensated FCV
Screen stroke adjustable	6 - 10mm maximum
Screen shaft speed	1130 - 950 rpm
Screen 'g' force	4.29 - 5.05 g

POWERUNIT AND HYDRAULICS

Engine	CAT C4.4 Tier III
Engine power	125 HP
Engine speed	2200 rpm
Flywheel Pump 1	DBH 5046,5046,5033
LH PTO Pump 2	DBH 5023,5023
RH PTO Pump 3	DBH 2SPA11
Total system flow	419 L (110.7 US Gpm)
Hydraulic tank capacity	630 L (166 US Gals)
Hydraulic tank ratio	1.51 : 1
Hydraulic Oil cooler	YES

ELECTRICS

Emergency stops	6 off, 1 feeder, 2 powerunit RH&LH, 2 chassis front RH&LH, 1 Walkway
Chassis cabling	Armored cable
Start Siren	YES - 10 sec delay
Engine shutdowns:	Low oil pressure High water temp Air filter blockage (selectable) Fuel contamination Low hydraulic tank level
Engine room light	YES



Remote tipping grid	YES - 2 function timed
Radio control tracks	optional - Hetronic system
Pendant track control	YES - plugged in at feeder end

TRACKS

Width	500mm (19.7")
Length	3800mm (12' - 6") crs
Height	798mm (31.4")
Gearbox	Bonfiglioli 709
Ratio	148:1
Motor	Rexroth 90
Speed max	1.14 Kph (0.71 Mph)
Flow rate	101.2 Lpm (26.7 US gpm)
Dual speed	TBC
Attachment to chassis	Bolt On for quick change

WHEELS

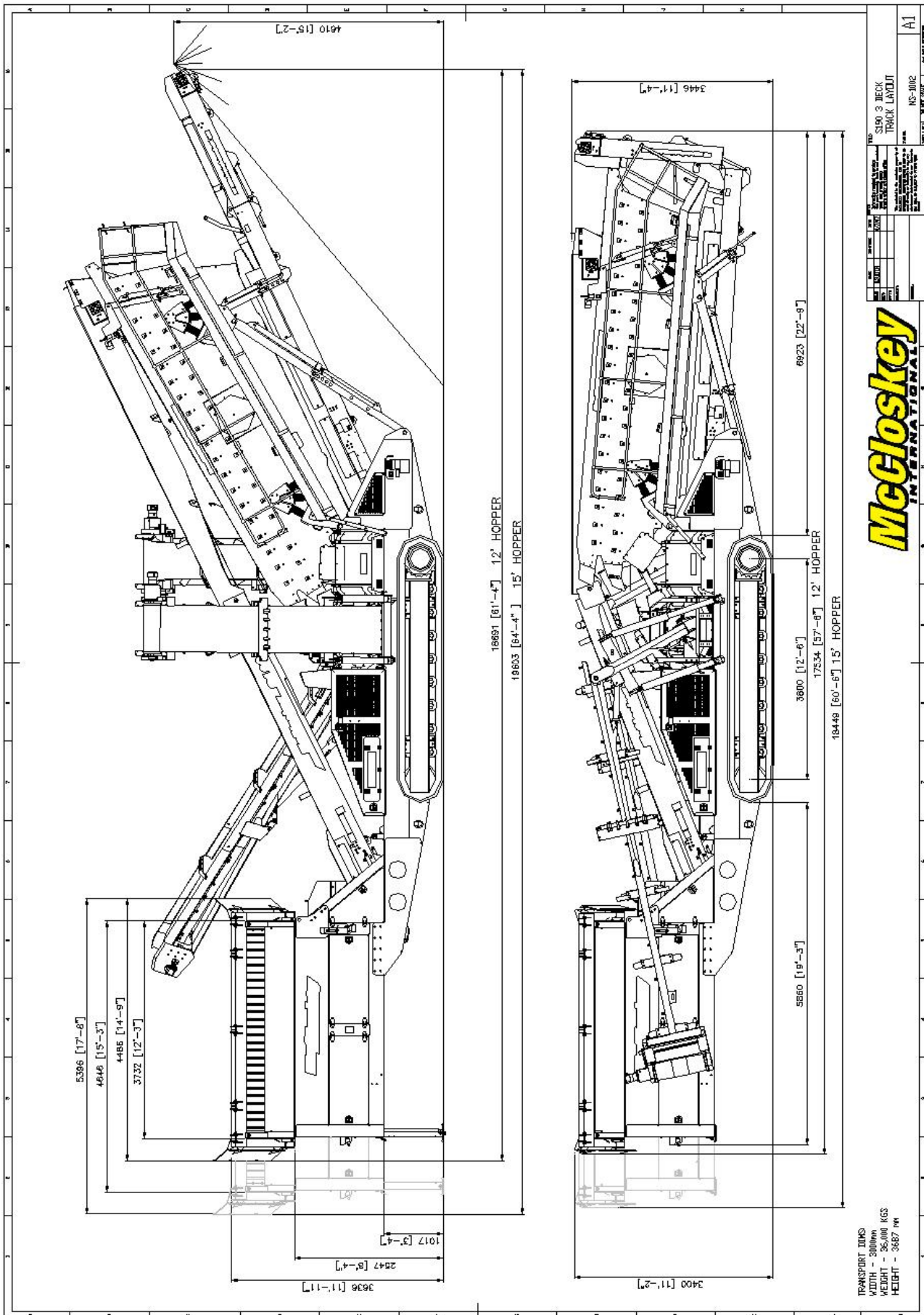
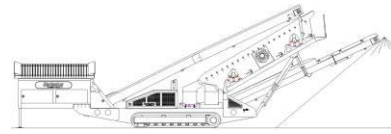
Width	2900mm (9' - 6")
Axle centers	1360mm (4' - 6")
Wheels	235/75/R17.5 dual
Axles	3 off
Brakes	YES
Spring suspension	YES
Mudguards	YES
Handbrake	OPTION
ABS	OPTION

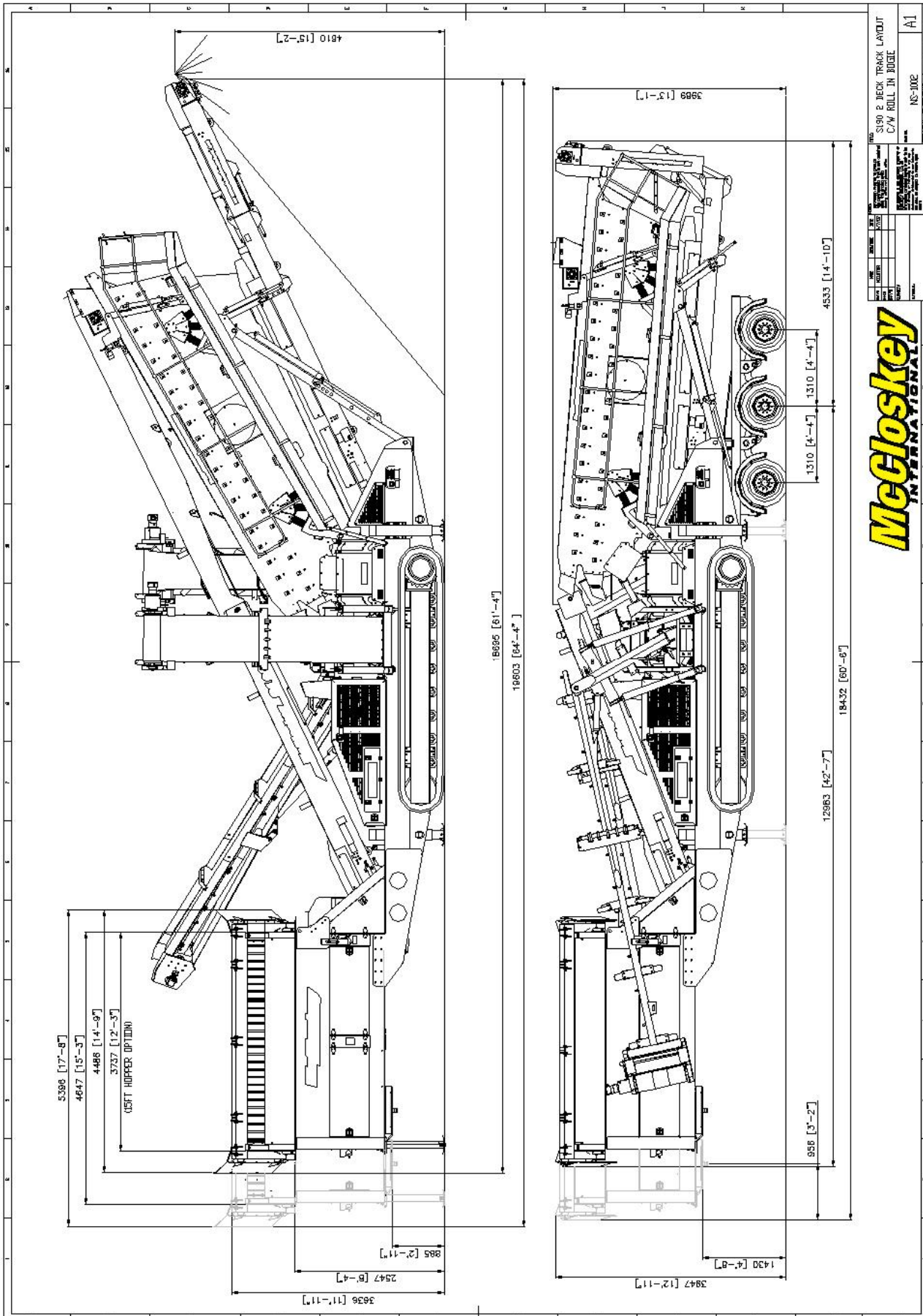
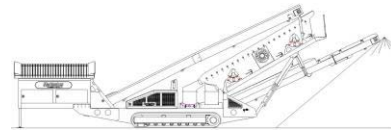
OPTIONS

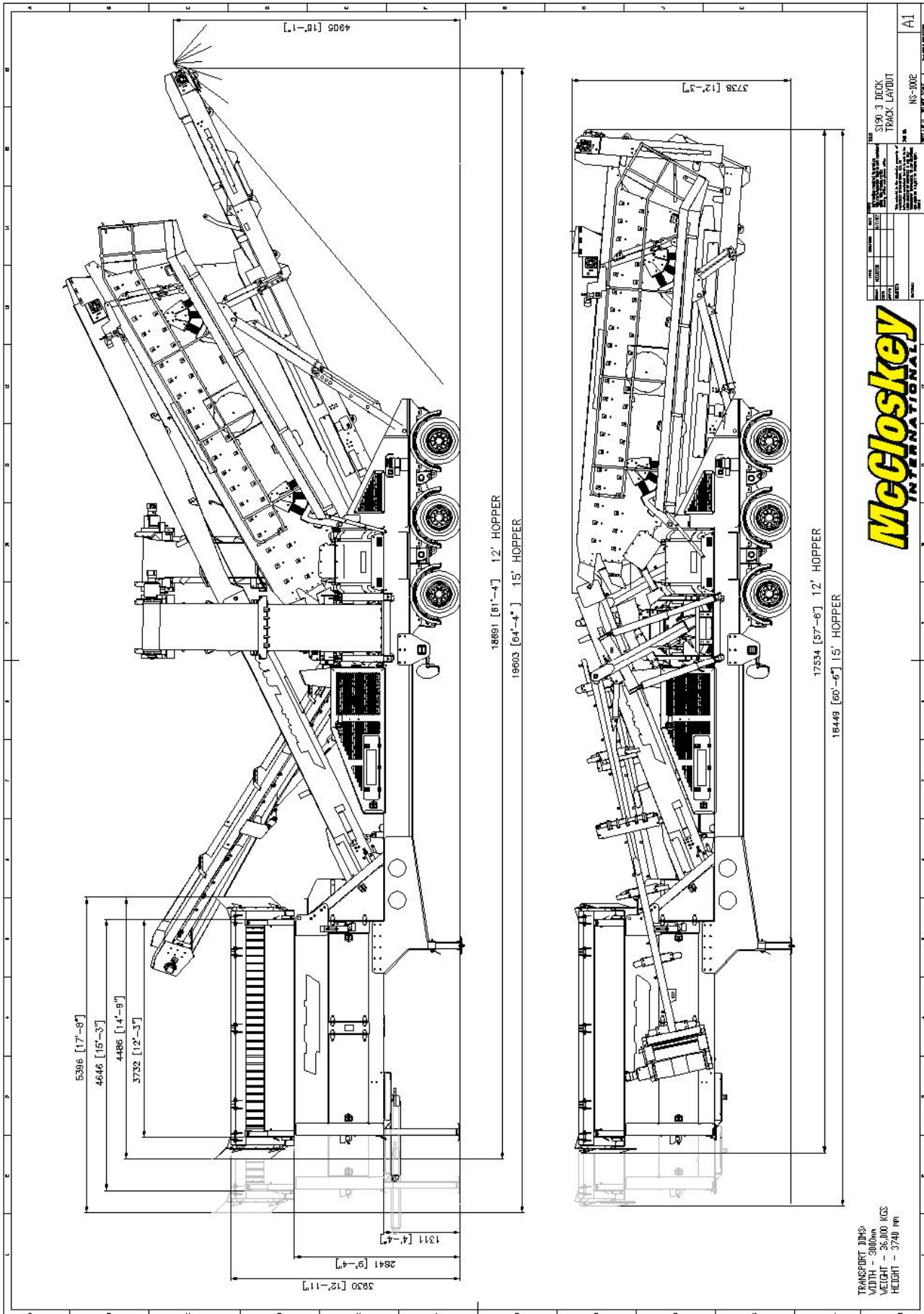
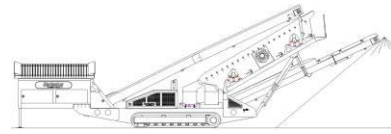
Single or double deck live head
Roll-in bogie system
15ft Hopper
3 Deck Rinser
Crusher chute (available with 15ft hopper only)
Radio remote control

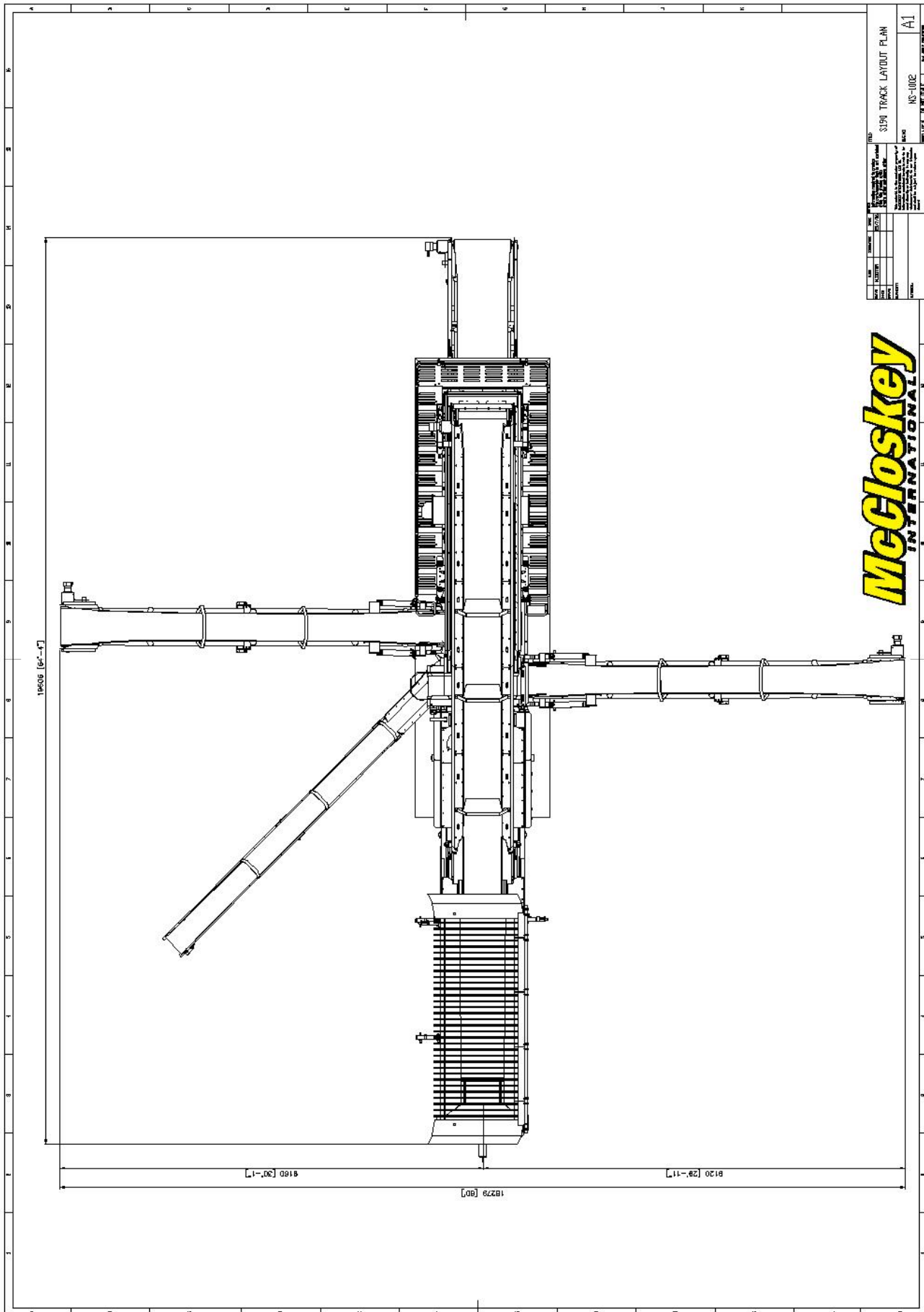
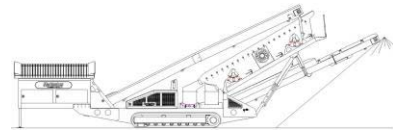
SAFETY FEATURES

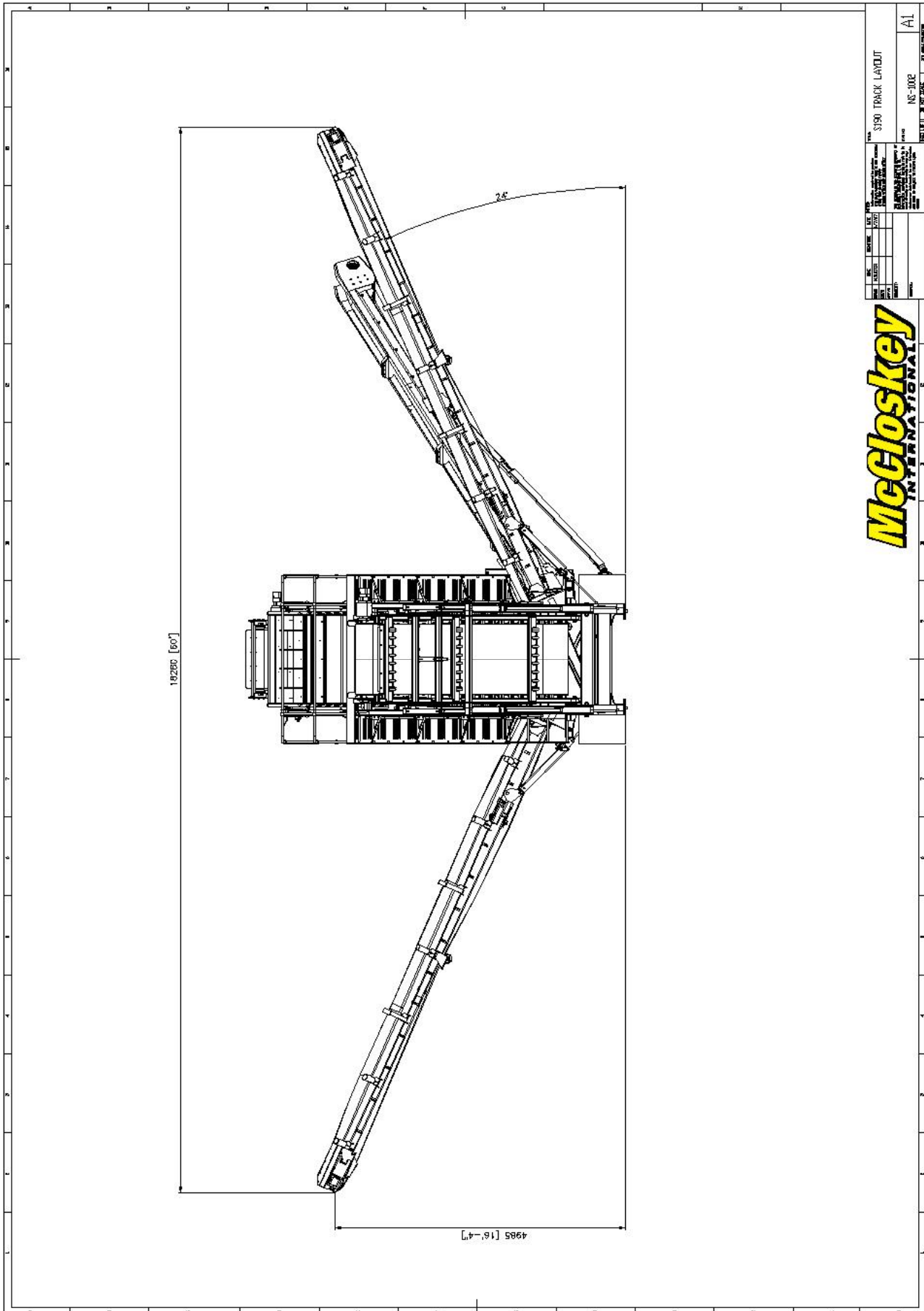
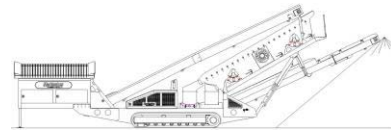
External belt alignment points
External grease points
Engine safety shutdown systems
Full safety guarding for nip points











McCloskey
INTERNATIONAL

S190 TRACK LAYOUT		A1
DATE	10/1/09	REV
BY	NS-1002	REV
CHECKED		REV
APPROVED		REV
McCloskey International 1000 McCloskey Drive St. Louis, MO 63103 Phone: (314) 241-1000 Fax: (314) 241-1001 Email: sales@mccloskey.com		